

Anti-FOLR1 hlgG1 Antibody(Mirvetuximab)

产品信息

GM-27354AB-10	10 µg
GM-27354AB-100	100 µg
GM-27354AB-1000	1 mg

抗体信息

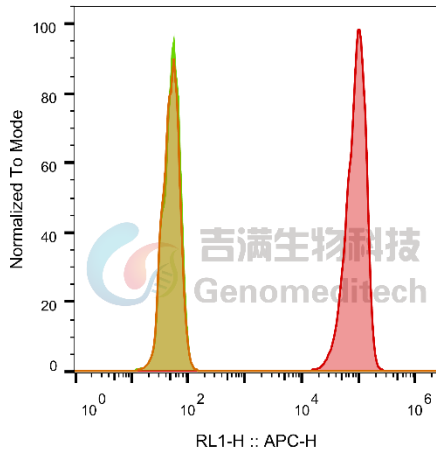
Species Reactivity	Human; cynomolgus
Clone	Mirvetuximab
Source/Isotype	Monoclonal human IgG1, κ
Application	Flow cytometry; Bioactivity-ELISA
Specificity	Detects FOLR1
Gene	FOLR1
Other Names	FBP, FOLR, FRalpha, NCFTD
Gene ID	P15328 (human), A0A2K5UR19-1 (cynomolgus)
Background	Folate receptor 1 (FOLR1), also known as folate receptor alpha and folate binding protein, is a glycosylphosphatidylinositol-linked protein, and is primarily expressed in tissues of epithelial origin. It is also expressed in kidney, lung and cerebellum. The secreted form is derived from the membrane-bound form either by cleavage of the GPI anchor, or/and by proteolysis catalyzed by a metalloprotease. FOLR1 binds to folate and reduced folic acid derivatives and mediates delivery of 5-methyltetrahydrofolate and folate analogs into the interior of cells. It has high affinity for folate and folic acid analogs at neutral pH. Exposure to slightly acidic pH after receptor endocytosis triggers a conformation change that strongly reduces its affinity for folates and mediates their release. It is required for normal embryonic development and normal cell proliferation.
Storage	Store at 2-8°C short term (1-2 weeks).Store at ≤ -20°C long term. Avoid repeated freeze-thaw.
Formulation	Phosphate-buffered solution, pH 7.2.
Endotoxin	< 1 EU/mg, determined by LAL gel clotting assay

Version:3.3

Data Examples

Flow cytometry

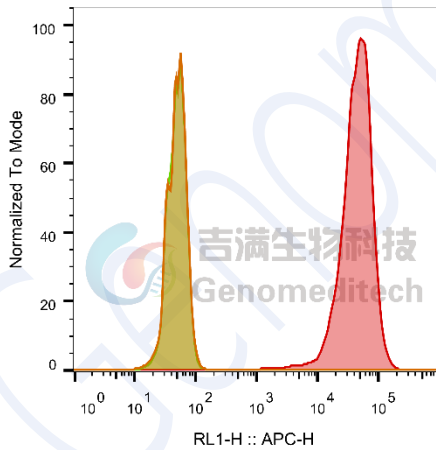
H_FOLR1 CHO-K1 Cell Line (Catalog # GM-C19083) was stained with Anti-FOLR1 hIgG1 Antibody (Catalog # GM-27354AB) or isotype control antibody, followed by anti-Human IgG APC-conjugated Secondary Antibody.



SampleID	Geometric Mean : RL1-H
CHO-K1 anti-H_FOLR1+APC-2nd Ab	51.0
CHO-K1 H_FOLR1 H_IgG+APC-2nd Ab	52.5
CHO-K1 H_FOLR1 anti-H_FOLR1+APC-2nd Ab	86987

Flow cytometry

Cynomolgus_FOLR1 CHO-K1 Cell Line (Catalog # GM-C20032) was stained with Anti-FOLR1 hIgG1 Antibody (Catalog # GM-27354AB) or isotype control antibody, followed by anti-Human IgG APC-conjugated Secondary Antibody.



SampleID	Geometric Mean : RL1-H
CHO-K1 anti-H_FOLR1+APC-2nd Ab	49.3
CHO-K1 Cyno_FOLR1 H_IgG+APC-2nd Ab	50.2
CHO-K1 Cyno_FOLR1 anti-H_FOLR1+APC-2nd Ab	41084

Fig. FACS

Bioactivity-ELISA

Anti-FOLR1 hIgG1 Antibody (Mirvetuximab) (Catalog # GM-27354AB) was immobilized at 6 $\mu\text{g/ml}$ (100 $\mu\text{L/well}$). Increasing concentrations of Biotinylated Human FOLR1 Protein; hFc-Avi Tag (Catalog # GM-87510RP) were added. Finally add HRP-Streptavidin.

Bioactivity-ELISA
0.6 μg Anti-FOLR1 hIgG1 Antibody(Mirvetuximab) of per well

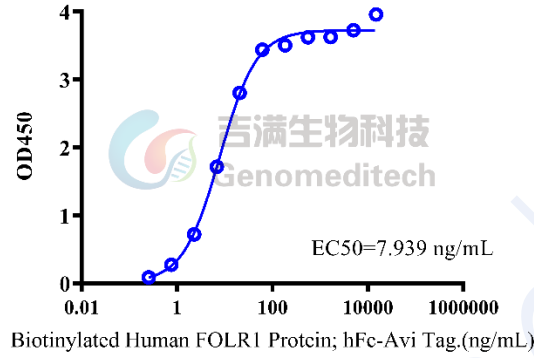


Fig. assay